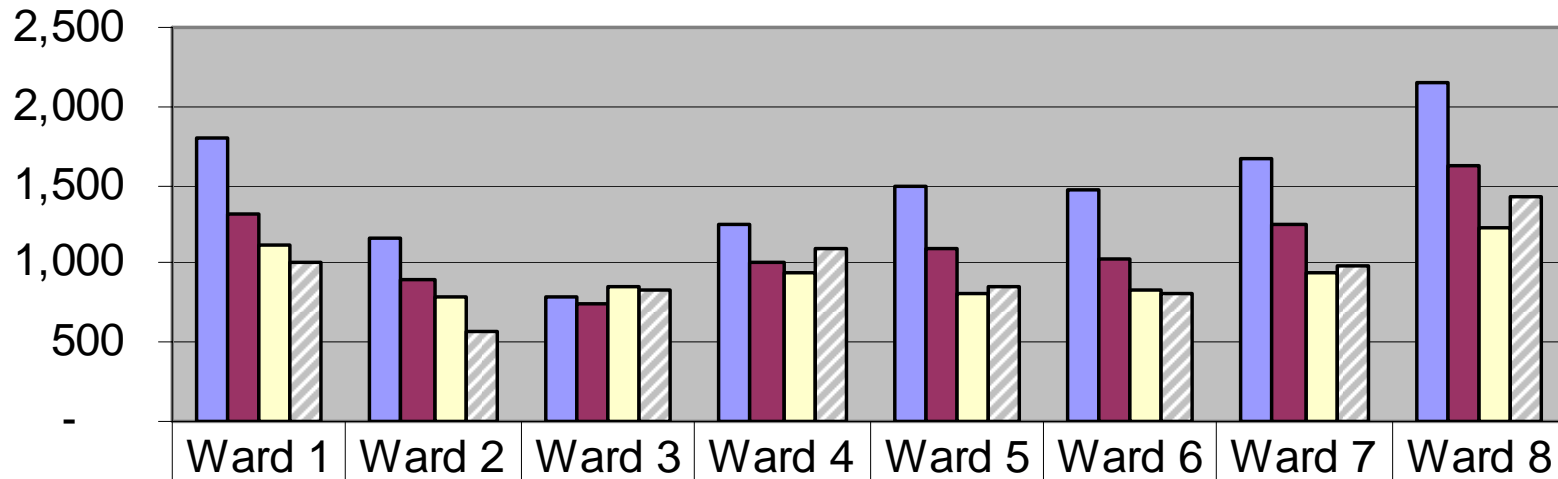


Live Births by Ward 1990,1995, 1999 and 2003



	Ward 1	Ward 2	Ward 3	Ward 4	Ward 5	Ward 6	Ward 7	Ward 8
1990	1,799	1,154	797	1,241	1,496	1,470	1,661	2,143
1995	1,306	889	756	1,003	1,092	1,033	1,249	1,621
1999	1,112	799	854	936	809	824	941	1,237
2003	1,007	577	832	1,086	860	811	989	1,428

Source: State Center for Health Statistics

D.C. Department of Health